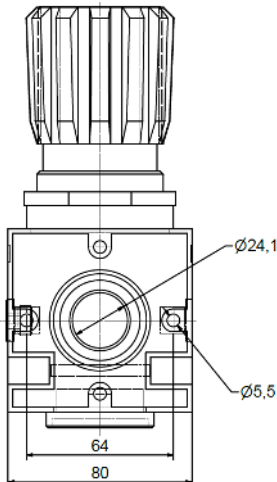
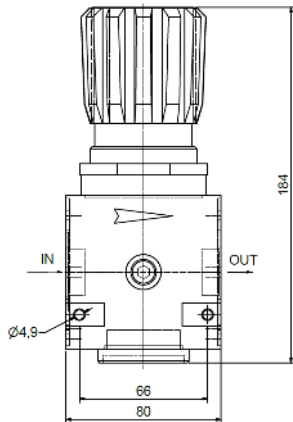


FRL PR-3/4"f



- Pressure regulator with piston for high operational reliability
- High stability of adjusting pressure, even if the input pressure or the flow rate changes
- Assembly independent of flow direction thanks to double-sided connection option for pressure gauge

- Working pressure range : 0-12 Bar
- Entry pressure: 0-18 bar
- With lockable adjustment button
- Standard features include: pressure gauge



Specifications

Inlet Connection 3/4" Female BSP thread

Outlet Connection 3/4" Female BSP thread

Manometer Connection 3/4" Female BSP thread

Flow rate 4.500 l/min

Dimension 80x80x184

Ordering Information

Ordering Information	Weight KG
----------------------	-----------

2813 9200 03	1,61
--------------	------